

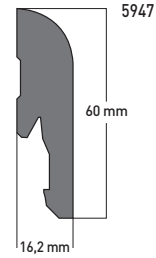
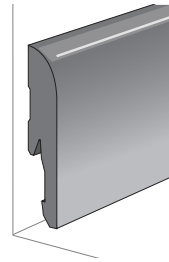
[504B] MDF DESIGN SKIRTING (PRODUCT CODE 5947)



Min. ambient temperature: 10 °C

PACKAGING:

Skirting: 5 X 2,20 M = 11 ml
Attachment clips (5948): Box of 30 clips



1. SURFACE PREPARATION

- The surface should be sound, clean and dry.
- Make sure that the bottom sections of the wall or partition are sound, hard and ready to receive the skirting attached with adhesive, screws or staples.
- Correct the evenness of the walls or partitions if required by applying a primer + coating, so as to obtain a plane, smooth and non-porous surface.
- Remove paint from painted surfaces.

2. MATERIALS and CUTTING THE SKIRTING

MATERIALS:

- Fine-toothed mitre saw / Electric cross-cut saw
- Nails
- Non-silicone adhesive sealant cartridge
- Fine grain sandpaper
- Sandpapering block

CUTTING THE SKIRTING

- For joins on the same wall, produce a straight cut.
 - For corners, cut at 45°. Cut, placing the attachment clip behind the skirting so that it is straight in the mitre box.
- Sand each cutting edge with medium grain sandpaper followed by fine grain sandpaper.



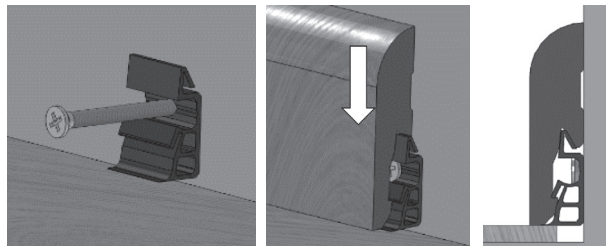
SILICONE PROHIBITED

3. INSTALLATION WITH CLIP PROFILES (Gerflor attachment clips 59480001)

POSITIONING OF CLIPS:

Case in which the clip is attached to the partition using staples (plasterboard) or screws (solid walls):

- Attach the clips to the wall every 25 to 50 cm, depending on the straightness of the walls.
- Snap-fasten the skirting by inserting it with a block and hammer.
- This solution enables the skirting to be unclipped.



Clip 5948

4. INSTALLATION WITHOUT CLIP PROFILES

Two methods:

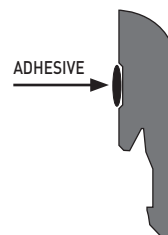
1. GLUING

Only recommended on perfectly plane surfaces

- Spray on the adhesive.
- Place the skirting against the wall and apply pressure to ensure satisfactory adherence.
- Repeat the procedure for all the skirting sections.

2. NAILING

- The skirting can be fixed by pneumatic or manual nailing



SILICONE PROHIBITED